

Goodflo Grease Dose Premier System



Operation & Maintenance Manual:

Goodflo Grease Dose Premier System
Automatic dispensing of Grease Dose Premium
(digestive enzyme solution)

Index

Safety Precautions	2
Operation and Parts	3
Mechanical Installation	4
Electrical Installation	5
Programming	6
Specification	9

Goodflo Grease Dose Premier System

Safety Precautions

Please read the following precautions prior to using the equipment. The Mains unit contains high voltage circuits which may expose you to danger of electric shock.

Do Not

- Mount the unit to unstable, irregular or non-vertical surfaces
- Place objects on top of the unit
- Insert any items or tools into the pump head
- Power the unit differently from the values stated
- Use damage or frayed cables
- Dismantle or modify the equipment

Always

- Use the equipment within the manufacturers guidelines
- Take care when handling liquids

Health & Safety

UK Health & Safety at Work Act 1974

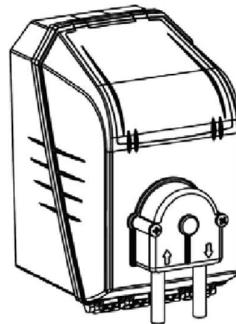
Section 6a of this act requires manufacturers to advise their customers on the safety and the handling precautions to be observed when operating, maintaining or servicing their products.

The users attention is drawn to the following:

All the sections of this manual must be read before any work is carried out involving this product.

Suitably trained and qualified personnel must carry out the installation.

Suitably trained and capable personnel must carry out the maintenance and servicing. Normal safety precautions must be taken and appropriate procedures observed to avoid accidents and injury.



Goodflo Grease Dose Premier System

Operation

The Goodflo Grease Dose System Premier System comes in two forms, mains electric and battery operated.

They are equivalent automatic dosing systems designed to introduce a measured amount of Grease Dose liquid into a pipe or grease trap on a daily timed basis.

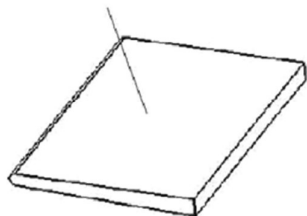
The units are controlled by a real time clock and offer 4 programmable timing entries and an extremely flexible on timing days and times.

Programming is achieved via an alphanumeric LED display and is edited using 4 simple arrow keys with security access code protection.

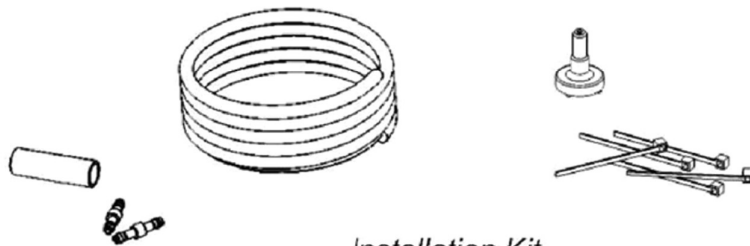
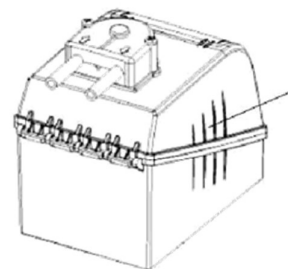
The battery powered pump incorporates a compensation facility that will increase pump run-time in relation to the reduction in battery power in order to maintain a constant dose.

Both units include a back up battery to store programming in the event of loss of power.

Instruction Manual



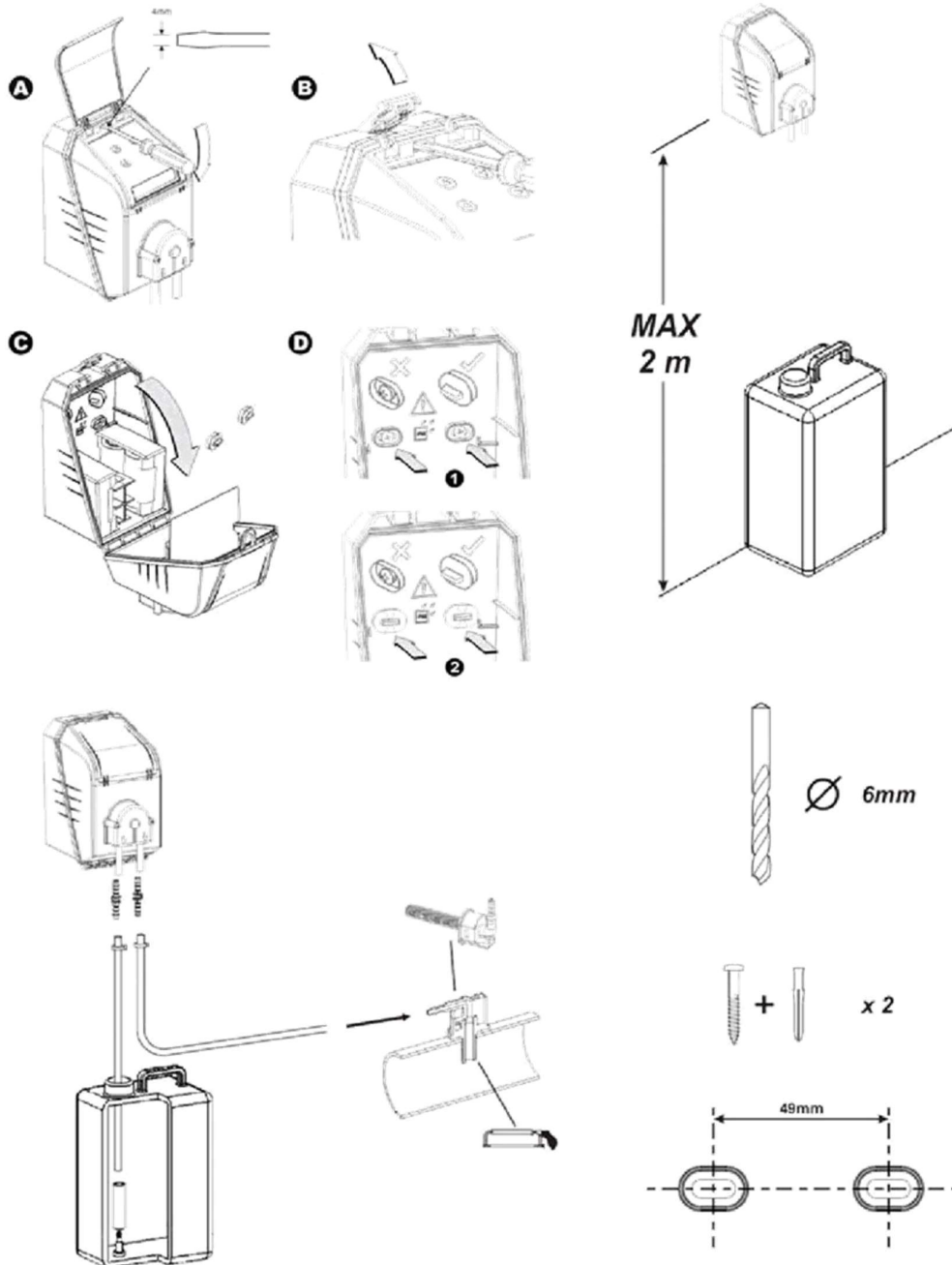
Unit



Installation Kit

Goodflo Grease Dose Premier System

Mechanical Installation

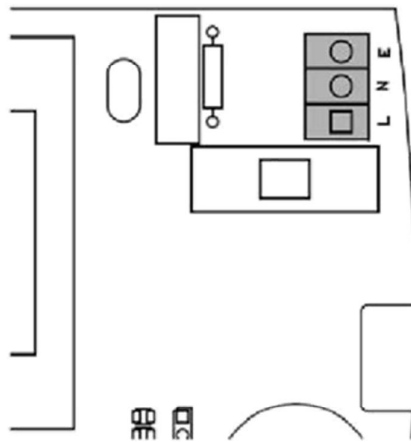


Goodflo Grease Dose Premier System

Electrical Installation

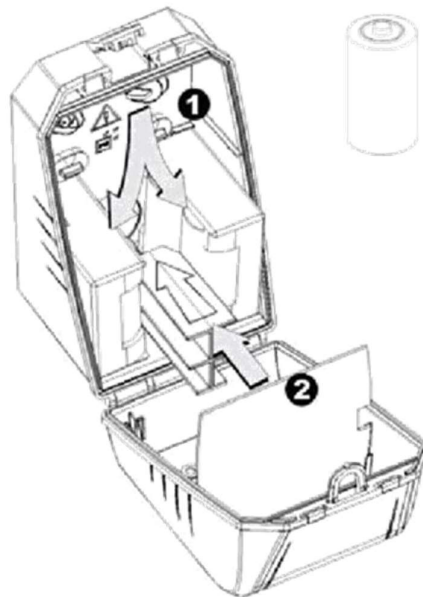


Activate back-up battery



230V AC 50/60Hz

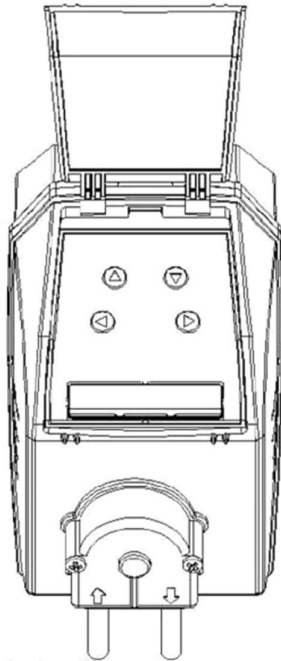
Should the supply cord be damaged, it should be replaced by the manufacturer or its service agent or a similarly qualified person in order to avoid a hazard.



4 x D-Cell

Goodflo Grease Dose Premier System

Programming Instructions



UP



DOWN



BACK



FORWARD/ACCEPT

Program parameters can be viewed by entering the access code as four dashes.



Priming the pump

Hold Down  Then Press  = **PRIMING PUMP**

Stopping the pump

Hold Down  Then Press  = **BODD PUMP STOPPED**

Re-starting the pump

Hold Down  Then Press  = **BODD MONDAY 00:00**

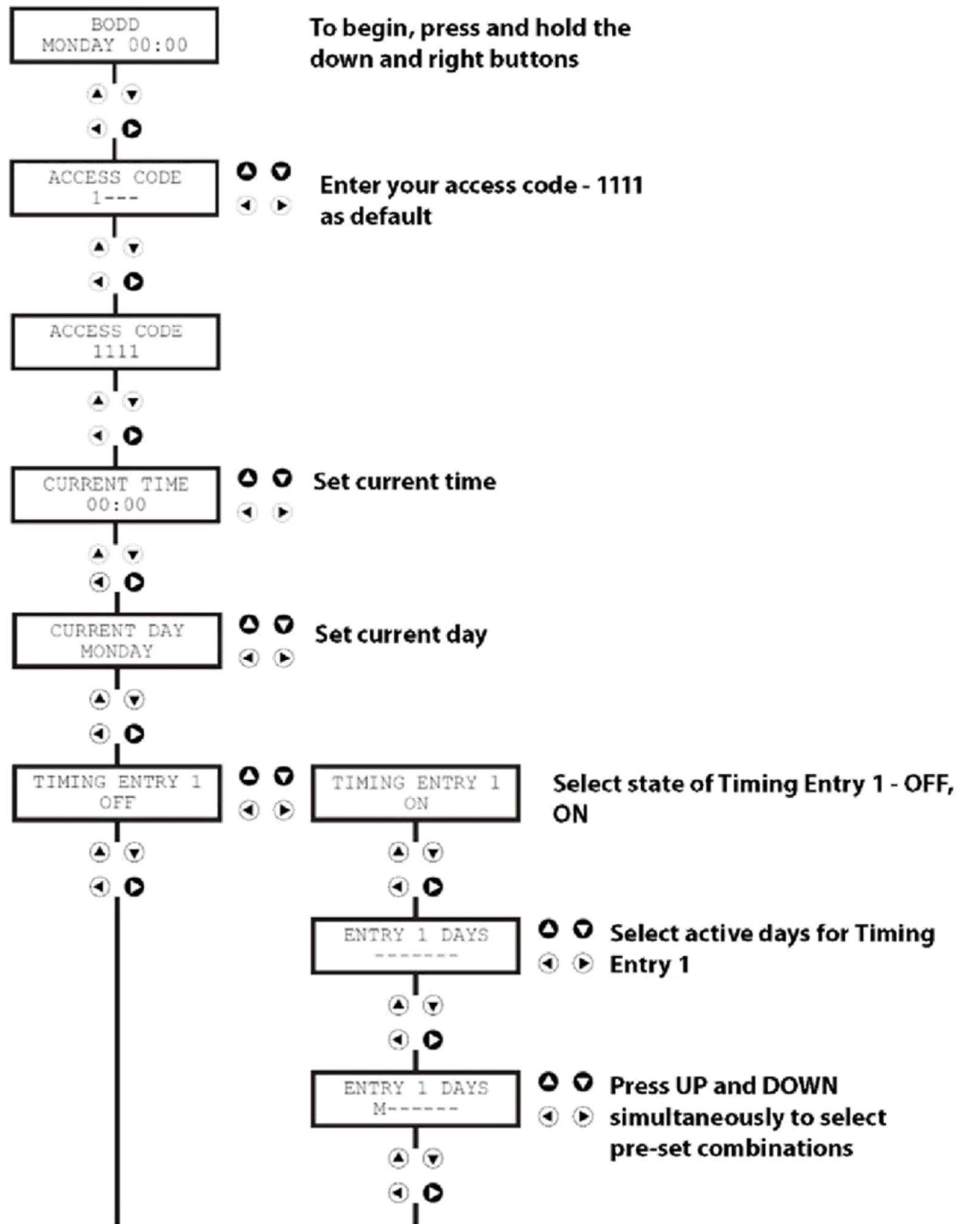
View battery life



Goodflo Grease Dose Premier System

Programming Instructions

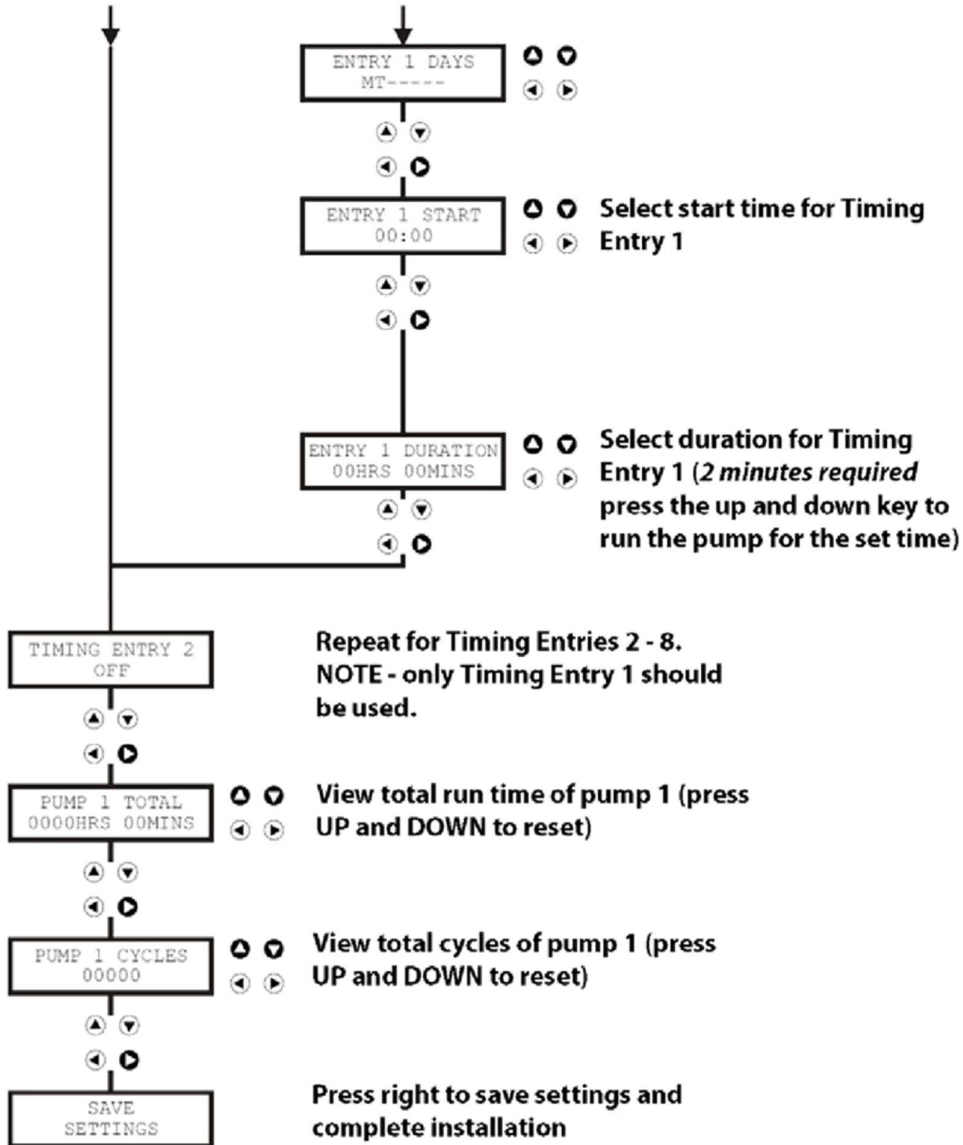


Continues on next Page >>



Goodflo Grease Dose Premier System

Programming Instructions



Goodflo Grease Dose Premier System

Specifications

POWER SUPPLY	Voltage	6V DC	230V AC
	Frequency	N/A	50-60 Hz
	Current	400 mA	10 mA
	Power	2.5W	2.5W

FUSING	T 400mA (Anti-surge)	T 400mA (Anti-surge)
MOTOR	6V DC, 400mA	
PUMP	5mm Silicone - Max : 75ml/min	
	3mm Silicone - Max : 50ml/min (Flowrate taken using water)	
ENCLOSURE	ABS - IP66	
WEIGHT (approx.)	1.5 Kg (including batteries)	1.0 Kg
APPROVALS	EMC 89/336/EEC - EN61000-6-2:2001:EN61000-6-3:2001	
	LVD 72/23/EEC - EN60335-1:1995	

